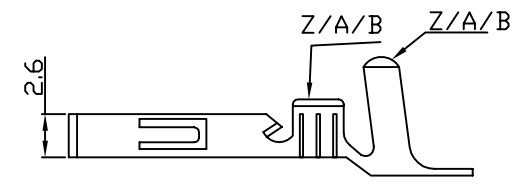
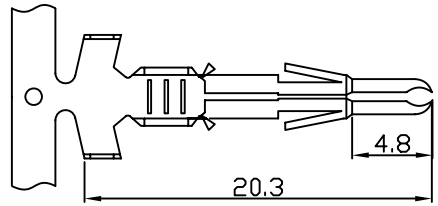
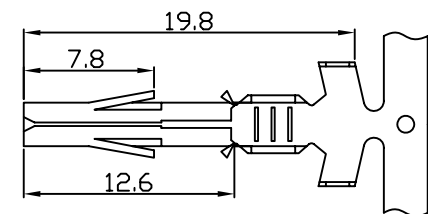
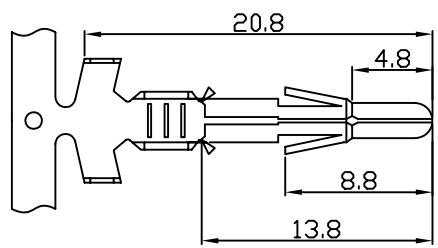


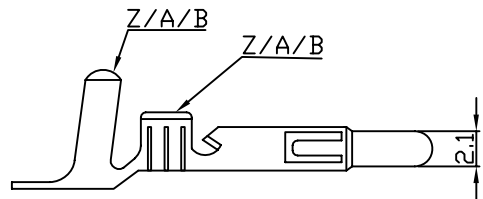
Rev	Revisions	Rev.Drawn	Date
A			16.04.08

TERMINAL WW210-FT
 A-High heel
 B-Low heel
 Z-Extra-high-heel: applied for joining cord

TERMINAL WW210-MT
 A-High heel
 B-Low heel
 Z-Extra-high-heel: applied for joining cord



AL/BL/ZL Applied form 6P~15P



Part no	wire range AWG	O.D.of wire insulation	Material	Planting	Quantit Per Reel
WW210-FTZ	20+20~ 18+16	0.5+0.5~ 0.75+1.25	Phosphor	Tin-plated	3000
WW210-FTA	20~14	1.9~3.4	Phosphor	Tin-plated	4000
WW210-FTB	24~18	1.5~3.1	Phosphor	Tin-plated	7000
WW210-FTZL	20+20~ 18+16	0.5+0.5~ 0.75+1.25	Phosphor	Tin-plated	3000(6~15p)
WW210-FTAL	20~14	1.9~3.4	Phosphor	Tin-plated	4000(6~15p)
WW210-FTBL	24~18	1.5~3.1	Phosphor	Tin-plated	7000(6~15p)
Part no	wire range AWG	O.D.of wire insulation	Material	Planting	Quantit Per Reel
WW210-MTZ	20+20~ 18+16	0.5+0.5~ 0.75+1.25	Phosphor	Tin-plated	3000
WW210-MTA	20~14	1.9~3.4	Phosphor	Tin-plated	4000
WW210-MTB	24~18	1.5~3.1	Phosphor	Tin-plated	7000

SST SOUTH SEA TERMINAL CO.,LTD

SGS Report No.:	Customer:	Part No.: WW210-MFT
Title:		
Drawn By: Storm.Li	SCALE 1:1	SHEET 1/1
Checked By: Simmon	REV. A	DWG NO.:
Approved By: Tony	TOLERANCE:	
Thire angle Projection		Units mm
General Dimesion Tolerance		
ANGLES ±		