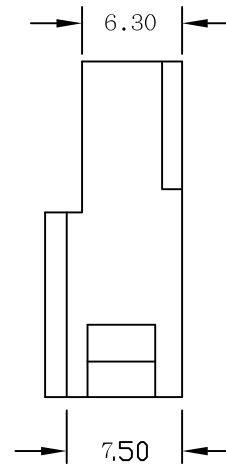
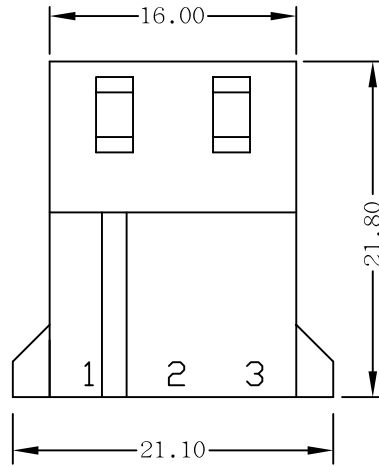
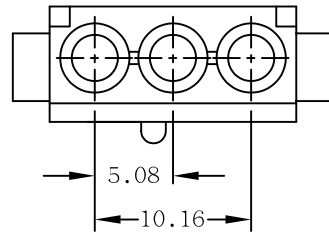


REVISION		
REV.	DESCRIPTION	DATE
A		JUNE.22.2005.



SPECIFICATIONS

Current rating : 5.0A AC,DC

Voltage rating : 250V AC,DC

Temperature range : -25°C to +85 °C

Contact resistance : 10mΩ Max.

Insulation resistance : 1000MΩ Min.

Withstanding voltage : 800V AC/minute

Material : Nylon 66, UL94V-2

GENERAL DIMENSION TOLERANCE	X.X ±0.25	X.XX ±0.15	X.XXX ±0.08
--------------------------------	--------------	---------------	----------------

DRAWN BY:	Storm.Li	CUSTOMER		THIRD ANGLE PROJECTION		UNITS:	mm
CHECKED BY:	Simmon Zhang	Title:	Housing	<i>SOUTH SEA TERMINAL CO.,LTD</i>			
APPROVED BY:	Tony Chou	P/NO:	SPS2-M03				