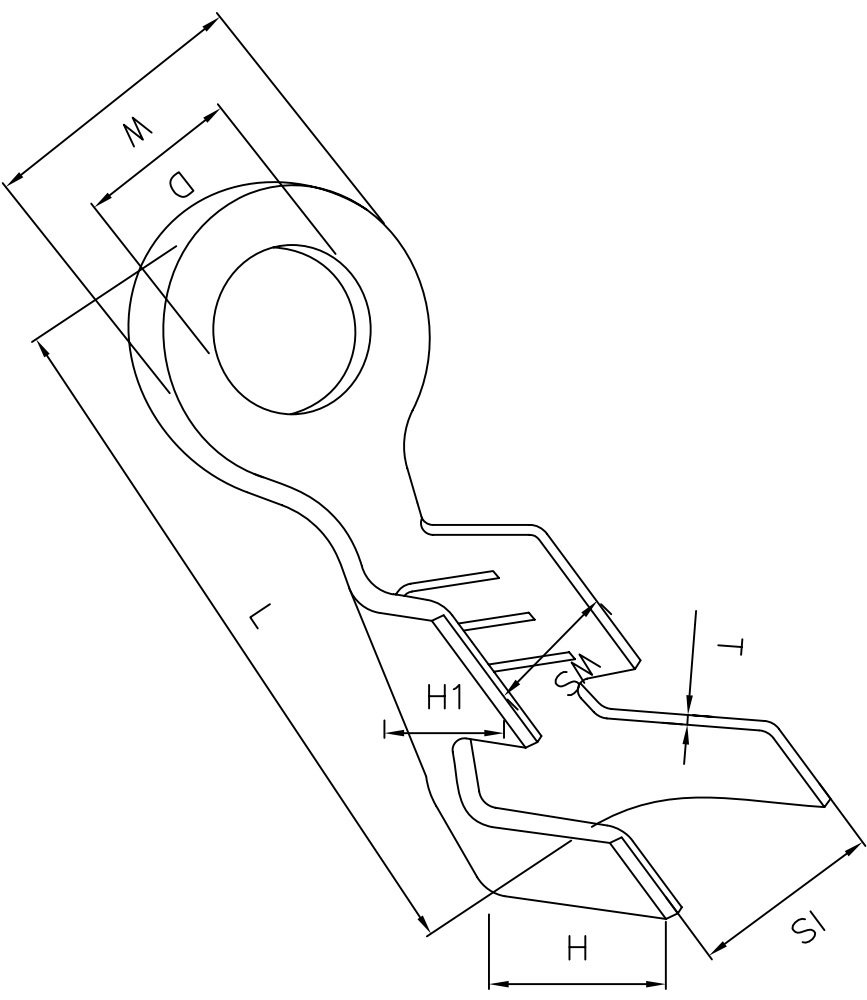


DRAWING OF FINISHED PRODUCTS



ITEM NO: S1445T-2
 MATERIAL: BRASS
 THICKNESS: 0.5
 HARDNESS: H/2
 PLATING: TIN 40u' MIN
 WIRE RANGE: (AWG) 14-22
 INSULATION O.D.: 3.8 MAX.
 VOLTAGE RATING: AC, DC, 250V
 CURRENT RATING: AC, DC, 15A
 TEMPERATURE RANGE: -25°C TO +85°C

DIMENSION: (MM)
 T: 0.5±0.03
 L: 16.0±0.35
 D: 4.3±0.15
 W: 7.0±0.2
 IS: 4.5±0.35
 WS: 3.2±0.35
 HI: 4.3±0.25
 H1: 3.3±0.25

Rev	Description/Date	Drawn By: Storm.li	Customer:	
△	Sample/Aug.31.2006	Checked By: Simmon	Part No.:	S1445T-2
△		Approved By: Tony	Title:	4.3Ø Ring Terminal B Type
SGS Report No.:			SOUTH SEA TERMINAL CO., LTD	
X±	Third angle projection	Units:	X±	.XX±0.30
.XXX±	General Dimension Tolerance	mm	.XXX±	.XXX±