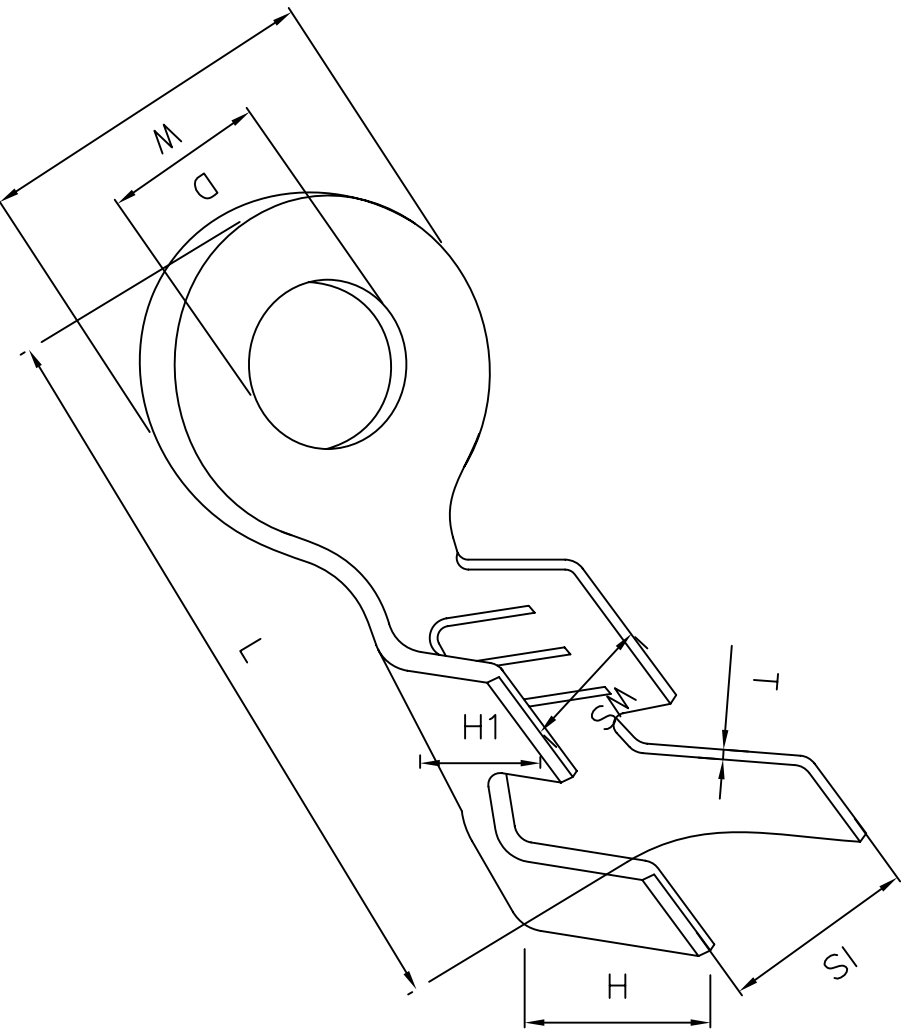


DRAWING OF FINISHED PRODUCTS



ITEM NO: S1441T-2
 MATERIAL: BRASS
 THICKNESS: 0.5
 HARDNESS: H/2
 PLATING: TIN 40u' MIN
 WIRE RANGE: KAWG14-20
 INSULATION D.D: 3.8 MAX.
 VOLTAGE RATING: AC, DC, 250V
 CURRENT RATING: AC, DC, 15A
 TEMPERATURE RANGE: -25°C TO +85°C

DIMENSION: (MM)
 T: 0.5±0.03
 L: 19.0±0.35
 D: 4.3±0.15
 W: 8.5±0.2
 IS: 5.0±0.35
 WS: 3.4±0.35
 H: 4.8±0.25
 H1: 3.2±0.25

Rev	Description/Date	Drawn By: Storm.li	Customer:	Title:		Third angle projection	Units: mm	X± .X±0.40 .XX±0.30 .XXX±
△	Sample/Aug.31.2006	Checked By: Simmon	Part No.:	4.3Ø Ring Terminal A Type		General Dimension Tolerance		
△		Approved By: Tony						
SGS Report No.:						SOUTH SEA TERMINAL CO.,LTD		