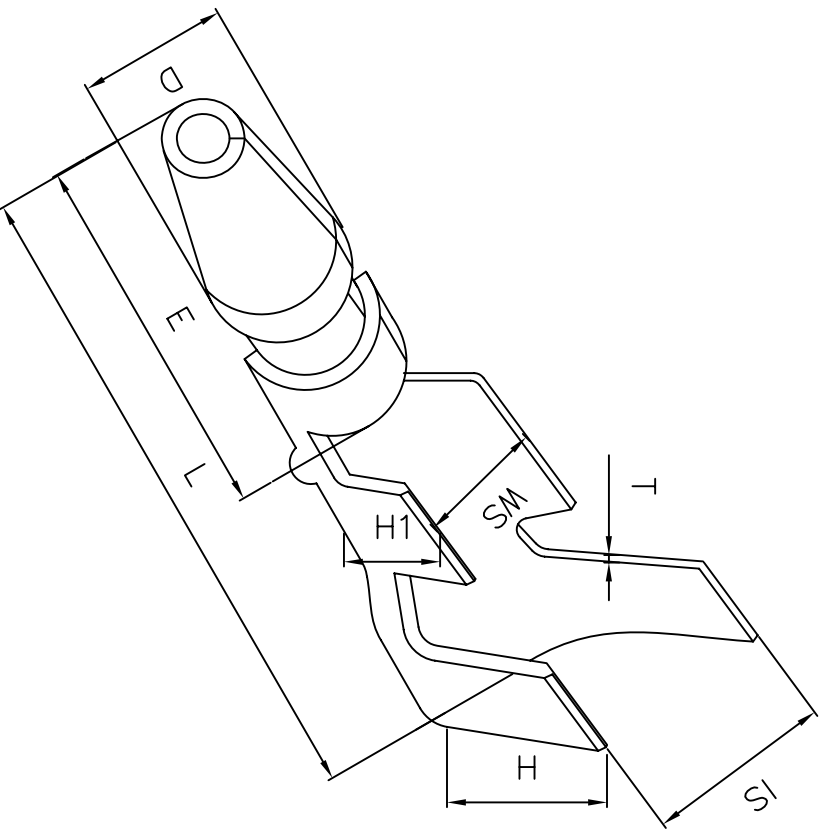


DRAWING OF FINISHED PRODUCTS



ITEM NO: S1051T-2
 MATERIAL: BRASS
 THICKNESS: 0.4
 HARDNESS: H/2
 PLATING: TIN 40u' MIN
 WIRE RANGE: (AWG) 14-20
 INSULATION O.D.: 3.8 MAX.
 VOL TAGE RATING: AC/250V, DC/350V
 CURRENT RATING: AC, DC, 15A
 TEMPERATURE RANGE: -25°C TO +85°C

DIMENSION: (MM)
 T: 0.4±0.03
 L: 17.5±0.35
 E: 8.8±0.25
 D: 3.96^{+0.1}₀
 IS: 5.0±0.35
 WS: 3.4±0.35
 H: 4.9±0.25
 H1: 3.2±0.25

1	2	3	4	5	6	7	8	9	10	11	12	13	14	
DRAWING OF FINISHED PRODUCTS														
<p> ITEM NO: S1051T-2 MATERIAL: BRASS THICKNESS: 0.4 HARDNESS: H/2 PLATING: TIN 40u' MIN WIRE RANGE: (AWG) 14-20 INSULATION O.D.: 3.8 MAX. VOL TAGE RATING: AC/250V, DC/350V CURRENT RATING: AC, DC, 15A TEMPERATURE RANGE: -25°C TO +85°C </p>														
<p> DIMENSION: (MM) T: 0.4±0.03 L: 17.5±0.35 E: 8.8±0.25 D: 3.96^{+0.1}₀ IS: 5.0±0.35 WS: 3.4±0.35 H: 4.9±0.25 H1: 3.2±0.25 </p>														
I	H	G	F	E	D	C	B	A						
1	2	3	4	5	6	7	8	9	10	11	12	13	14	

1	2	3	4	5	6	7	8	9	10	11	12	13	14	
J	I	Rev		Description/Date	Drawn By: Storm.li	Customer:		Part No.:	Third angle projection					Units:
1	2	3	4	5	6	7	8	9	10	11	12	13	14	
1	2	3	4	5	6	7	8	9	10	11	12	13	14	
1	2	3	4	5	6	7	8	9	10	11	12	13	14	
1	2	3	4	5	6	7	8	9	10	11	12	13	14	
1	2	3	4	5	6	7	8	9	10	11	12	13	14	
1	2	3	4	5	6	7	8	9	10	11	12	13	14	
1	2	3	4	5	6	7	8	9	10	11	12	13	14	
1	2	3	4	5	6	7	8	9	10	11	12	13	14	
1	2	3	4	5	6	7	8	9	10	11	12	13	14	
1	2	3	4	5	6	7	8	9	10	11	12	13	14	
1	2	3	4	5	6	7	8	9	10	11	12	13	14	
1	2	3	4	5	6	7	8	9	10	11	12	13	14	
1	2	3	4	5	6	7	8	9	10	11	12	13	14	
1	2	3	4	5	6	7	8	9	10	11	12	13	14	
1	2	3	4	5	6	7	8	9	10	11	12	13	14	
1	2	3	4	5	6	7	8	9	10	11	12	13	14	
1	2	3	4	5	6	7	8	9	10	11	12	13	14	
1	2	3	4	5	6	7	8	9	10	11	12	13	14	
1	2	3	4	5	6	7	8	9	10	11	12	13	14	
1	2	3	4	5	6	7	8	9	10	11	12	13	14	
1	2	3	4	5	6	7	8	9	10	11	12	13	14	
1	2	3	4	5	6	7	8	9	10	11	12	13	14	
1	2	3	4	5	6	7	8	9	10	11	12	13	14	
1	2	3	4	5	6	7	8	9	10	11	12	13	14	
1	2	3	4	5	6	7	8	9	10	11	12	13	14	
1	2	3	4	5	6	7	8	9	10	11	12	13	14	
1	2	3	4	5	6	7	8	9	10	11	12	13	14	
1	2	3	4	5	6	7	8	9	10	11	12	13	14	
1	2	3	4	5	6	7	8	9	10	11	12	13	14	
1	2	3	4	5	6	7	8	9	10	11	12	13	14	
1	2	3	4	5	6	7	8	9	10	11	12	13	14	
1	2	3	4	5	6	7	8	9	10	11	12	13	14	
1	2	3	4	5	6	7	8	9	10	11	12	13	14	
1	2	3	4	5	6	7	8	9	10	11	12	13	14	
1	2	3	4	5	6	7	8	9	10	11	12	13	14	
1	2	3	4	5	6	7	8	9	10	11	12	13	14	
1	2	3	4	5	6	7	8	9	10	11	12	13	14	
1	2	3	4	5	6	7	8	9	10	11	12	13	14	
1	2	3	4	5	6	7	8	9	10	11	12	13	14	
1	2	3	4	5	6	7	8	9	10	11	12	13	14	
1	2	3	4	5	6	7	8	9	10	11	12	13	14	
1	2	3	4	5	6	7	8	9	10	11	12	13	14	
1	2	3	4	5	6	7	8	9	10	11	12	13	14	
1	2	3	4	5	6	7	8	9	10	11	12	13	14	
1	2	3	4	5	6	7	8	9	10	11	12	13	14	
1	2	3	4	5	6	7	8	9	10	11	12	13	14	
1	2	3	4	5	6	7	8	9	10	11	12	13	14	
1	2	3	4	5	6	7	8	9	10	11	12	13	14	
1	2	3	4	5	6	7	8	9	10	11	12	13	14	
1	2	3	4	5	6	7	8	9	10	11	12	13	14	
1	2	3	4	5	6	7	8	9	10	11	12	13	14	
1	2	3	4	5	6	7	8	9	10	11	12	13	14	
1	2	3	4	5	6	7	8	9	10	11	12	13	14	
1														