

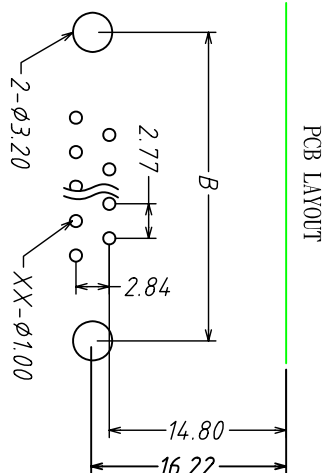
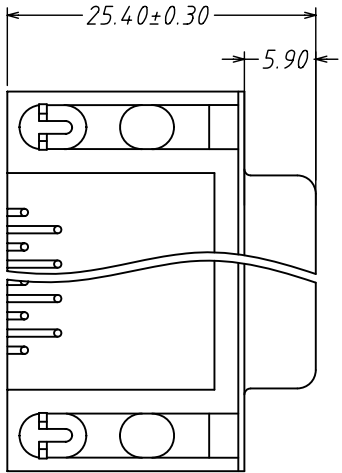
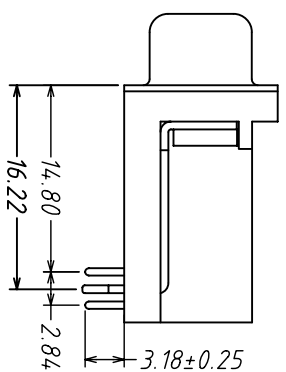
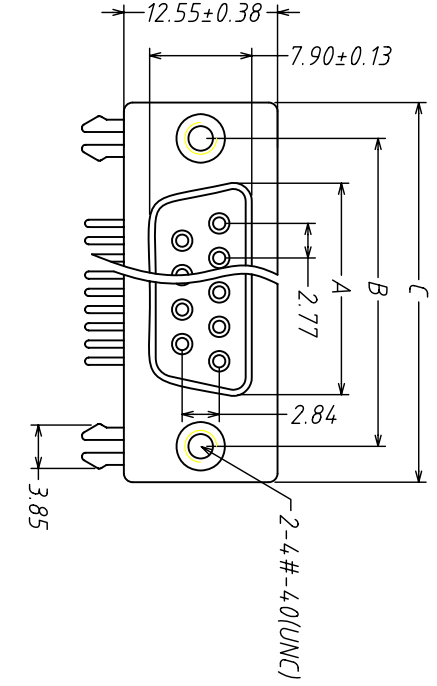
Rev	Revisions	Rev/Drawn	Date

SPECIFICATIONS:

ELECTRICAL SPECIFICATION
 Contact Current Rating: 3 Amperes
 Dielectric Withstanding Voltage:
 AC 1000/60ses. r. m. s.
 Insulation Resistance:
 5000 Megohms MINIMUM at DC 500V
 Contact Resistance: 25 Milliohms
 Maximum
 Operating Temperature: -55°c_+105°c

MECHANICAL CHARACTERISTICS:
 Contact Insertion Force: 300gfMax
 Contact Separation Force: 25gf Min

MATERIALS:
 Contacts: Brass
 Insulator: PBT+30%(UL94V-0)
 Shell: Steel



NUMBER OF CONTACTS	DIMENSIONS(mm)		
	A±0.25	B±0.13	C±0.38
9	16.33	24.99	30.85
15	24.66	33.32	39.14
25	38.38	47.04	53.04
37	54.84	63.50	69.32

PART NO:
 DBR2 XXS XNX X
 Type: No of contact Female
 Insulator color:
 1:Black
 2:Blue
 3:White
 Thickness of gold plated
 1: Gold flash
 2: 3u"
 3: 5u"
 4: 10u"
 5: 15u"
 6: 20u"
 7: 30u"
 Metal shell:
 N: Nickel plated

A: W/Board lock Screw Fixed
 B: W/Rivet Only
 C: Rivet W/Board lock Screw Separated
 D: Rivet W/Board lock Screw Fixed

SGS Report No.: Customer: Part No.:
 DBR2-XXS-X-N-X-X
 Title: D-Sub 90° DIP 13.84mm Female type
 Drawn By: Storm.Li
 Checked By: Simmon
 Approved By: Tony

SST SOUTH SEA TERMINAL CO.,LTD

SCALE	SHEET	REV.	DWG NO.:	X±	X±
2:1	1/1	A	PR-060601007	X±	X±

Three angle Projection
 General Dimension Tolerance
 Units: .XX± 0.10 .XX±
 mm: .XXX±0.05 .XXX±